



Scott County / City of Davenport, Iowa

Summary - Auditor's Office

Parcel ID L0013-25
Alternate ID L06010
Property Address 606 W 2ND ST
 DAVENPORT IA 52801
Sec/Twp/Rng N/A
Brief ORIGINAL TOWN ORIGINAL TOWN & LECLAIRE'S ADD ELY 202' OF
 WASHINGTONSQUARE
Tax Description (Note: Not to be used on legal documents)
Deed Book/Page 1961268
Contract Book/Page
Gross Acres 1.48
Exempt Acres 1.48
Net Acres 0.00
Adjusted CSR Pts 0
District DAEX - DAVENPORT DAVENPORT EXPANDED SMID
School District DAVENPORT SCHOOL
Subdivision ORIGINAL TOWN



Owners - Auditor's Office

Deed Holder
[YMCA OF THE IOWA MISSISSIPPI VALLEY](#)
 630 E 4TH ST
 DAVENPORT IA 52801

Contract Holder

Mailing Address
 YMCA OF THE IOWA MISSISSIPPI VALLEY
 630 E 4TH ST
 DAVENPORT IA 52801

DBA (Doing Business As) - Assessor's Office

YMCA - OLD DOWNTOWN

Land - Assessor's Office

Map Area Exempt
Lot Area 1.48 Acres ; 64,640 SF

Land Sizes Used For Assessment Purposes Only. Not A Survey Of The Property.

Commercial Buildings - Assessor's Office

Total GBA 50,132 SF
Total Units 0
Building 1: Recreational Facility, Brick Veneer, 2 Story, Built - 1963, 15310 SF, Bsmt - 15310 SF, HVAC - Combination FHA - AC, Roof - Rubber Membrane/Stl, Condition - Normal
Adjustments: Bsmt Fin - classrooms, 15310 SF
 Porch, 112 SF
 Conc Patio, 900 SF
Addition 1: Recreational Facility, Brick Veneer, 1 Story, Built - 1963, 18332 SF, Bsmt - 10500 SF
 HVAC - Combination FHA - AC, Roof - Rubber Membrane/Stl
Adjustments: Bsmt Fin - classrooms, 10500 SF
 Porch, 128 SF
 Porch, 128 SF
Addition 2: Recreational Facility, Brick Veneer, 1 Story, Built - 1963, 1180 SF, Bsmt - 0 SF
 HVAC - Combination FHA - AC, Roof - Rubber Membrane/Stl
Adjustments: Porch, 1180 SF
 Conc Patio, 625 SF
Plumbing: 1 - Adequate
Building Extras: #1- Swimming Pool (Commercial), 800 SFWSA, Indoor Municipal (Avg 5,000SF), Sweep=No, Heat=Yes, Diving Brd=No, 1975, Qty1
 #2- Swimming Pool (Commercial), 1,600 SFWSA, Indoor Municipal (Avg 5,000SF), Sweep=No, Heat=No, Diving Brd=No, 1975, Qty1
 #3- Swimming Pool (Commercial), 800 SFWSA, Indoor Municipal (Avg 5,000SF), Sweep=No, Heat=Yes, Diving Brd=No, 1975, Qty1
 #4- Swimming Pool (Commercial), 1,600 SFWSA, Indoor Municipal (Avg 5,000SF), Sweep=No, Heat=No, Diving Brd=No, 1975, Qty1

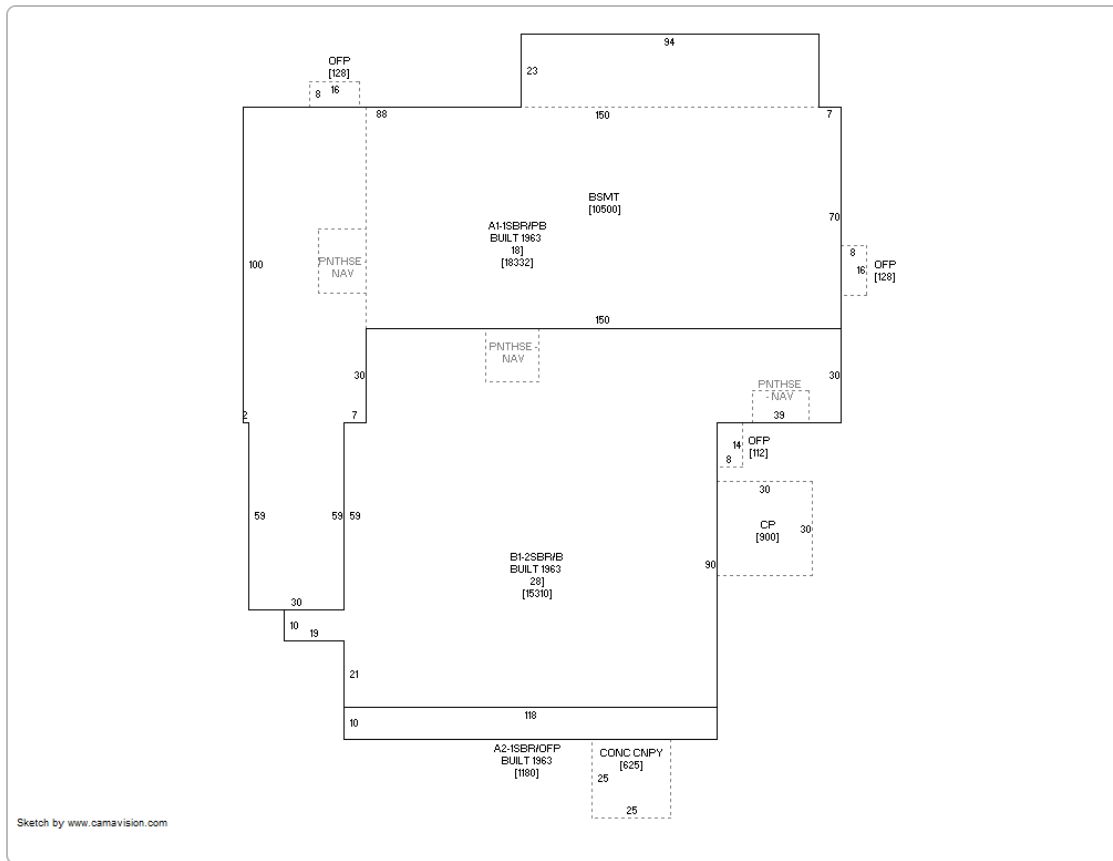
Yard Extras - Assessor's Office

#1 - (1) BRICK FENCE Quantity=108.00, Units=Lineal Feet, Height=5, Built 1972
 #2 - (1) Paving - Concrete 17,400 SF, Concrete Parking, Average Pricing, Built 1963

Photos - Assessor's Office



Sketches - Assessor's Office



Permits - Assessor's Office

Permit #	Date	Description	Amount
E010269	11/30/2016	Plumb/Elec	1,000
P008599	12/11/2015	Plumb/Elec	4,250
P006010	04/02/2013	Int-Remodel	2,400
189137	08/01/2002	Fitout-Interior/Ste	45,900
178746	08/01/1999	Misc	3,168

Sales - Assessor's Office

Date	Seller	Buyer	Recording	Sale Condition - NUTC	Type	Multi Parcel	Amount
8/31/1961		DAVENPORT YMCA & YWCA BLDG CORP	257-0268	NONE	X		\$0.00

Recent Sales in Area

Sale date range:

From:

02/24/2012

To:

02/24/2022

Sales by Neighborhood

Sales by Subdivision

1500

Feet

Sales by Distance

Valuation - Assessor's Office

	2021	2020	2019	2018	2017
Classification	Commercial	Commercial	Commercial	Exempt	Exempt
+ Assessed Land Value	\$323,200	\$323,200	\$323,200	\$323,200	\$133,800
+ Assessed Building Value	\$3,674,260	\$3,674,260	\$3,674,260	\$3,349,350	\$2,837,500
+ Assessed Dwelling Value	\$0	\$0	\$0	\$0	\$0
= Gross Assessed Value	\$3,997,460	\$3,997,460	\$3,997,460	\$3,672,550	\$2,971,300
- Exempt Value	(\$3,997,460)	(\$3,997,460)	(\$3,997,460)	(\$3,672,550)	(\$2,971,300)
= Net Assessed Value	\$0	\$0	\$0	\$0	\$0

Taxation - Auditor\Treasurer's Office

	2020 Pay 2021-2022	2019 Pay 2020-2021	2018 Pay 2019-2020	2017 Pay 2018-2019
+ Taxable Land Value	\$0	\$0	\$0	\$0
+ Taxable Building Value	\$0	\$0	\$0	\$0
+ Taxable Dwelling Value	\$0	\$0	\$0	\$0
= Gross Taxable Value	\$0	\$0	\$0	\$0
- Military Credit	\$0	\$0	\$0	\$0
= Net Taxable Value	\$0	\$0	\$0	\$0
x Levy Rate (per \$1000 of value)	43.06474	42.94686	42.91991	42.98449
= Gross Taxes Due	\$0.00	\$0.00	\$0.00	\$0.00
- Ag Land Credit	\$0.00	\$0.00	\$0.00	\$0.00
- Family Farm Credit	\$0.00	\$0.00	\$0.00	\$0.00
- Homestead Credit	\$0.00	\$0.00	\$0.00	\$0.00
- Disabled and Senior Citizens Credit	\$0.00	\$0.00	\$0.00	\$0.00
- Business Property Credit	\$0.00	\$0.00	\$0.00	\$0.00
= Net Taxes Due	\$0.00	\$0.00	\$0.00	\$0.00

Tax History - Treasurer's Office

Year	Due Date	Amount	Paid	Date Paid	Receipt
2020	March 2022	\$0	No		620717
	September 2021	\$0	No		
2019	March 2021	\$0	No		673707
	September 2020	\$0	No		
2018	March 2020	\$0	No		610675
	September 2019	\$0	No		
2017	March 2019	\$0	No		674421
	September 2018	\$0	No		
2016	March 2018	\$0	No		652023
	September 2017	\$0	No		
2015	March 2017	\$0	No		819121
	September 2016	\$0	No		
2014	March 2016	\$0	No		742430
	September 2015	\$0	No		

2013	March 2015	\$0	No	615453
	September 2014	\$0	No	
2012	March 2014	\$0	No	662831
	September 2013	\$0	No	
2011	March 2013	\$0	No	662289
	September 2012	\$0	No	
2010	March 2012	\$0	No	662168
	September 2011	\$0	No	
2009	March 2011	\$0	No	661803
	September 2010	\$0	No	
2008	March 2010	\$0	No	661541
	September 2009	\$0	No	

Davenport Data Correction Feedback Form

[Link to Data Correction Feedback Form](#)

Treasurer Data Correction Feedback Form

[Link to Treasurer Data Correction Feedback Form](#)

Pay Property Taxes

[Click here to pay your Property Taxes online for this parcel](#)

Davenport Tax Credit Applications

[Apply for Homestead, Sales Questionnaire, Military or Business Property Tax Credits](#)

Iowa Land Records

*Data for Scott County between Beacon and Iowa Land Records is available on the Iowa Land Records site beginning in 1989.
For records prior to 1989, contact the County Recorder or Customer Support at www.iowaLandRecords.org.*

No data available for the following modules: Summary - Inactive, Residential Dwelling - Assessor's Office, Agricultural Buildings - Assessor's Office, Tax Sale Certificates - Treasurer's Office, Special Assessments - Treasurer's Office, Scott County Data Correction Feedback Form, Scott County Tax Credit Applications.

Disclaimer: The information in this web site represents current data from a working file which is updated regularly. Information is believed reliable, but its accuracy cannot be guaranteed. No warranty, expressed or implied, is provided for the data herein or its use.

[User Privacy Policy](#)
[GDPR Privacy Notice](#)

[Last Data Upload: 2/24/2022, 4:17:18 AM](#)

Version 2.3.177